



iClock S680-JC

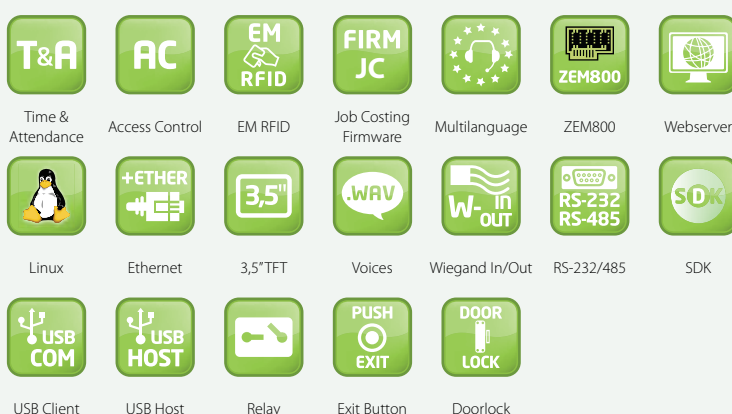
Proximity T&A Terminal
with Job Costing Firmware

iClock S680 JC is a Time & Attendance and access control terminal with incorporated EM proximity card reader and 3.5" TFT display.

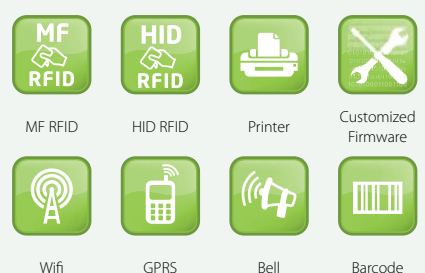
Easy to install, and with a modern design, it includes ZKTeco's Job Costing firmware. Job Costing, or Production Control, is a solution for the management of projects and tasks performed by employees inside the company, tracking the time and associated costs of each job. The multi-lingual application, is compatible with Windows. The system allows the user to identify by means of pin, proximity or barcode. Apart from project cost management, it includes basic T&A functions, such as check-in & check-out.

- Job Costing Firmware Version for Production Control
- Project, Task and Job Management
- Barcode structure definition
- Units manufactured by Job number or project
- Pendrive download structure defined by user
- Multiverification by user
- Function keys definition by weekday and time range
- Access Control functions

Standard Functions



Optional Functions

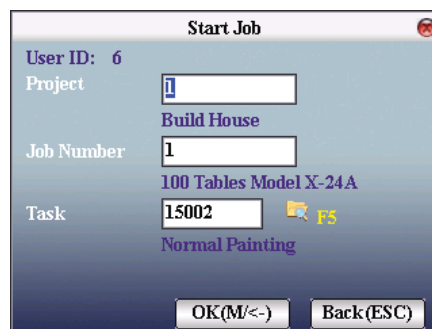


Specifications

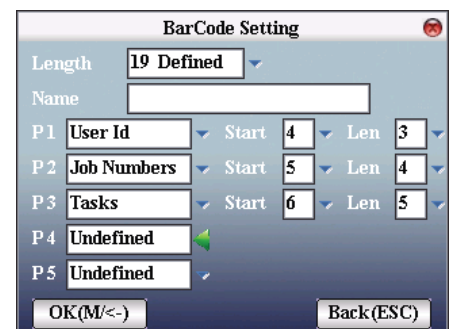
Card Capacity	30.000	Proximity Module	EM card
Record Capacity	200.000	Verification Speed	≤1 sec
Display	3.5-inch Screen	Function Keys	8 defined by user
Communication	RS-232/485, TCP/IP, USB Client/Host	Languages	Most used European languages
Optional	MF RFID, Wi-Fi, GPRS	Voices	Male and female
Power Supply	DC 12V 1.5A	SDK	Professional SDK
Operating Temp.	0°C - 45°C	Dimension	140x160x45mm (LxWxT)
Operating Humidity	20%-80%	Gross Weight	1.40 kg



Function keys definition



Start Job

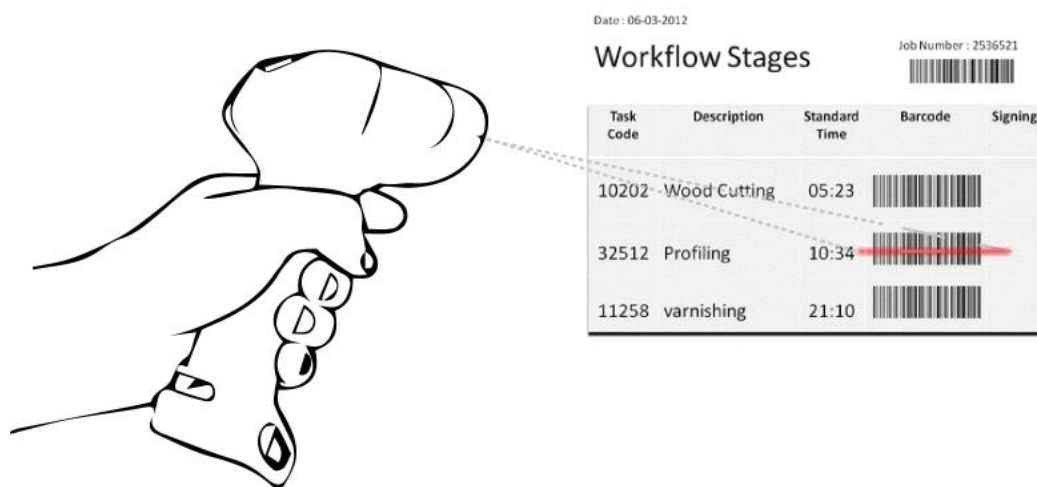


Barcode Setting

Data Processing

The system allows the users identification by PIN, proximity card and barcode. Different lengths can be set in the barcodes to associate with employees, job numbers and tasks.

The system can be completed with **Job Costing Software** for Windows OS..



ZKTeco Europe.

Av. Camino de lo Cortao, 10. Nave 1.
28703 San Sebastián de los Reyes. Madrid. SPAIN
Tel: +34 916 532 891 E-mail: sales@zkteco.eu
www.zkteco.eu

© Copyright 2015. ZKTeco Inc. ZKTeco Logo is a registered trademark of ZKTeco or a related company. All other product and company names mentioned are used for identification purposes only and may be the trademarks of their respective owners. All specifications are subject to change without notice. All rights reserved.

